

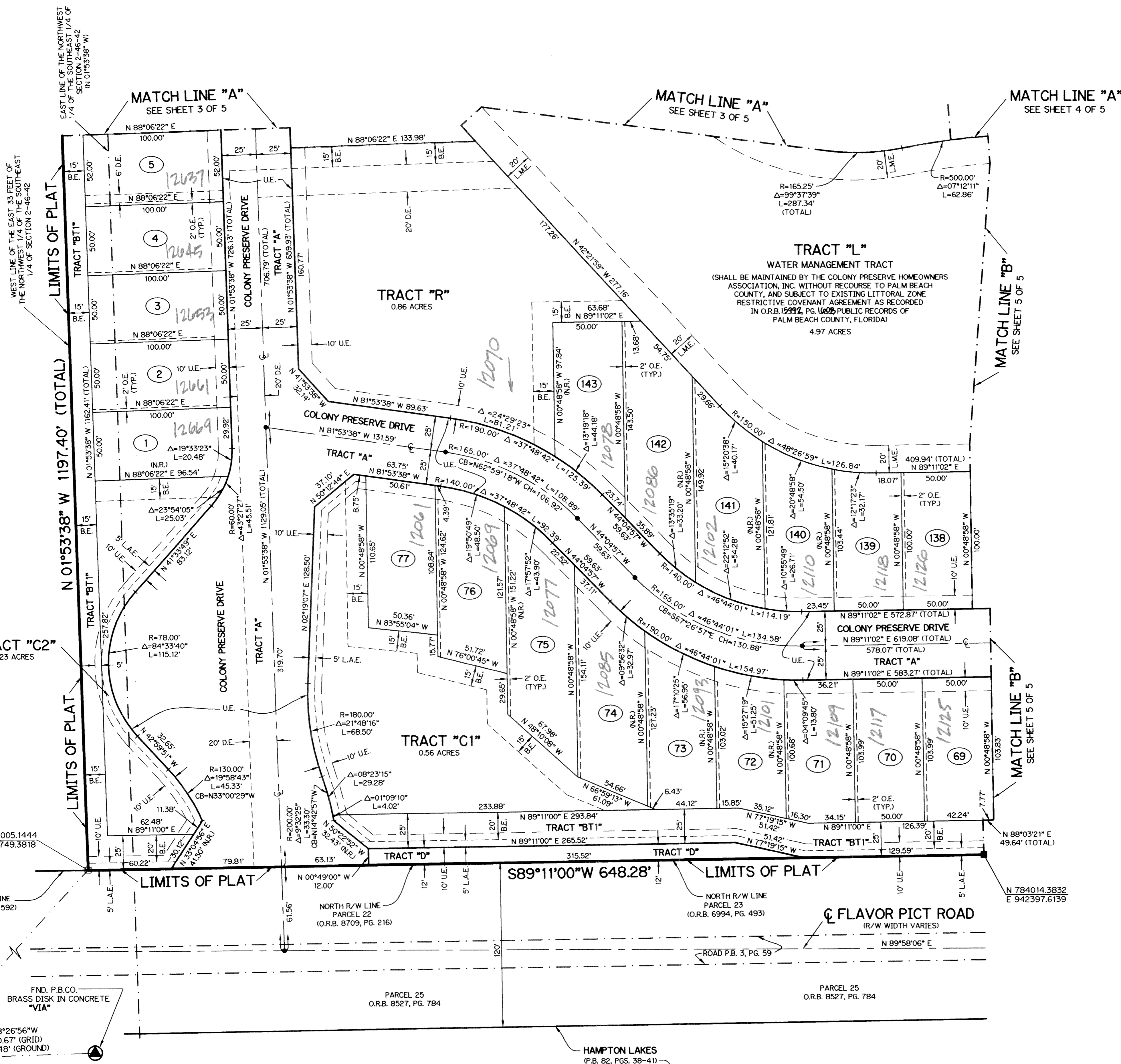
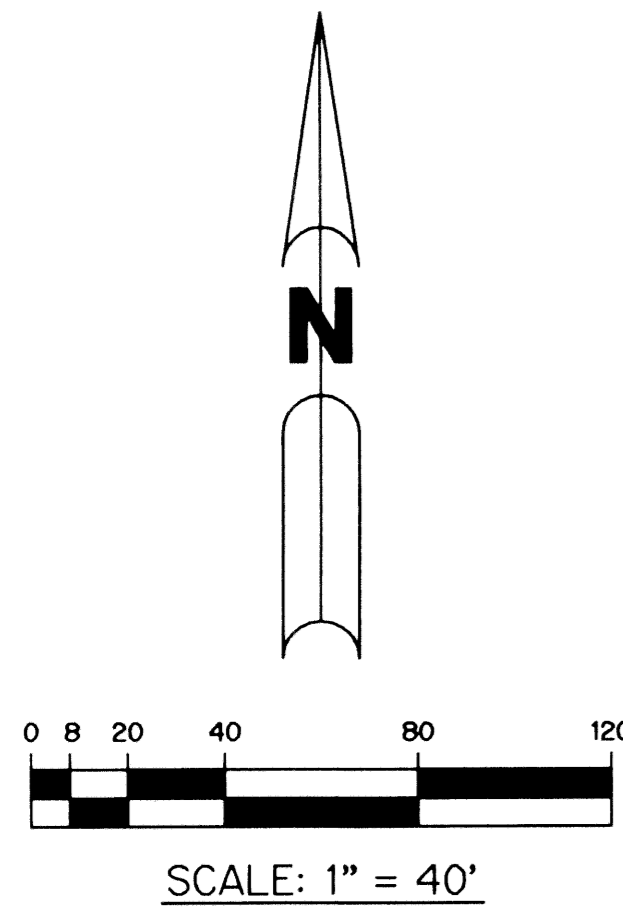
COLONY PRESERVE, P.U.D.

A PARCEL OF LAND LYING AND BEING WITHIN THE NORTHEAST QUARTER (N.E. 1/4)
OF THE SOUTHEAST QUARTER (S.E. 1/4) OF SECTION 2, TOWNSHIP 46 SOUTH,
RANGE 42 EAST, PALM BEACH COUNTY, FLORIDA

SHEET 2 OF 5 APRIL, 2003

THIS INSTRUMENT PREPARED BY
WILBUR F. DIVINE, P.S.M. 4190, STATE OF FLORIDA
LAWSON, NOBLE AND WEBB, INC.
ENGINEERS PLANNERS SURVEYORS
420 COLUMBIA DRIVE
WEST PALM BEACH, FLORIDA 33409
LB-6674

20

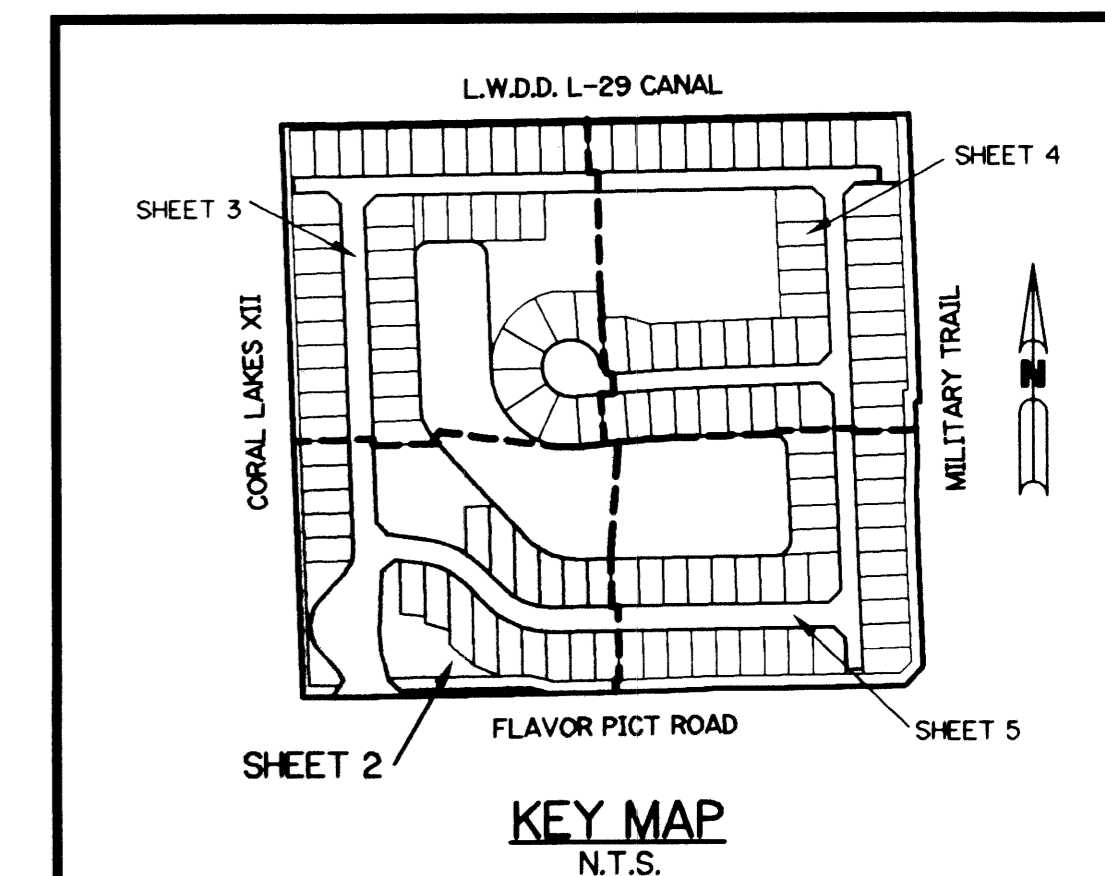


LEGEND:

- - SET PERMANENT REFERENCE MONUMENT, L.B. #6674
- - FOUND PERMANENT REFERENCE MONUMENT, L.B. #6674
- - SET PERMANENT CONTROL POINT, L.B. #6674
- Δ - DELTA ANGLE
- BE - BUFFER EASEMENT
- CB - CHORD BEARING
- CH - CHORD DISTANCE
- C - CENTERLINE
- D.B. - DEED BOOK
- D.E. - DRAINAGE EASEMENT
- GND. - GROUND
- L - ARC LENGTH
- L.E. - LANDSCAPE EASEMENT
- L.A.E. - LIMITED ACCESS EASEMENT
- L.M.A.E. - LAKE MAINTENANCE ACCESS EASEMENT
- L.M.E. - LAKE MAINTENANCE EASEMENT
- L.W.D.D. - LAKE WORTH DRAINAGE DISTRICT
- NR. - NOT RADIAL
- N.T.S. - NOT TO SCALE
- O.E. - OVERHANG EASEMENT
- OR.B. - OFFICIAL RECORD BOOK
- P.A.E. - PEDESTRIAN ACCESS EASEMENT
- P.B. - PLAT BOOK
- P.C. - POINT OF CURVATURE
- P.C.P. - PERMANENT CONTROL POINT
- PGS. - PAGES
- P.O.B. - POINT OF BEGINNING
- P.O.C. - POINT OF COMMENCEMENT
- P.S.M. - PROFESSIONAL SURVEYOR AND MAPPER
- P.T. - POINT OF TANGENCY
- R - RADIUS
- RAD. - RADIAL
- R/W - RIGHT-OF-WAY
- TYP. - TYPICAL
- U.E. - UTILITY EASEMENT
- FND. - FOUND
- P.B.C.O. - UTILITY EASEMENT

NOTE:

COORDINATES SHOWN ARE GRID COORDINATES
DATUM = NAD 83 (1990 ADJUSTMENT)
ZONE = FLORIDA EAST ZONE
LINEAR UNIT = U.S. SURVEY FEET
COORDINATE SYSTEM = 1983 STATE PLANE
TRANSVERSE MERCATOR PROJECTION
ALL DISTANCES ARE GROUND
SCALE FACTOR = 1.0000351
PLAT BEARING = GRID BEARING
NO ROTATION



A713 SHEET 2 OF 5

SUBDIVISION: COLONY PRESERVE, P.U.D.
BOOK: 101
FLOOD ZONE: F
QUAD: # 740
SE: # 30436
TAX: 455
PUD NAME: COLONY PRESERVE

FND. P.B.C.O.
BRASS DISK IN CONCRETE
"TOAST"
N 88°06'22" E
57.465' (GRID)
51.185' (GROUND)

NORTH R/W LINE
PARCEL 22
(O.R.B. 8709, PG. 216)

PARCEL 25
O.R.B. 8527, PG. 784

NORTH R/W LINE
PARCEL 23
(O.R.B. 6994, PG. 493)

N 784014.3832
E 942397.6139

HAMPTON LAKES
(P.B. 82, PGS. 38-41)